

雅2000 伸縮部材追加一覽

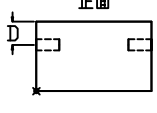
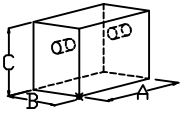
外柵

pa212235

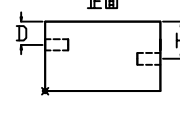
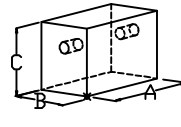
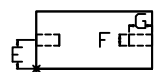
正面 外柵(2穴)

pa212235A

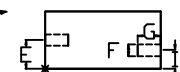
正面 外柵(2穴)



平面



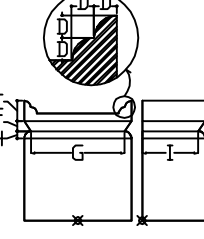
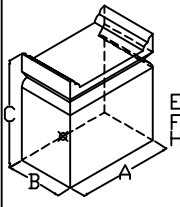
平面



供物台

pa219007

供物台

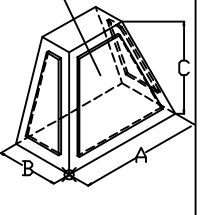
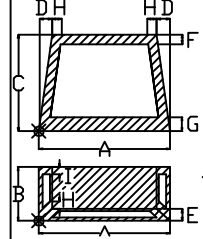


壁石

pa222001A

壁石(3面チーバーノフ付)

厚さ:J



pa222002A

壁石(前面チーバーノフ付)

厚さ:I

pa222005A

壁石(後面チーバーノフ付)

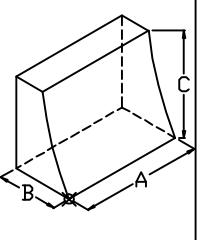
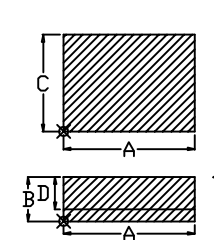
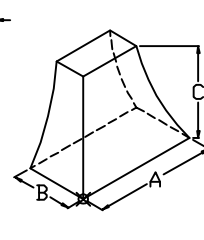
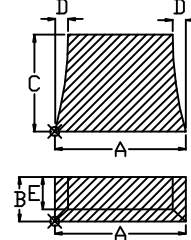
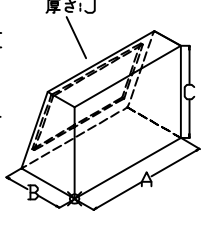
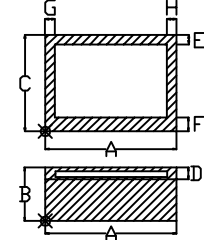
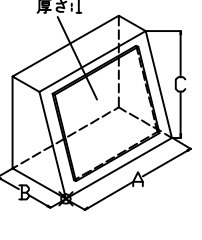
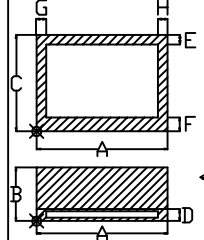
厚さ:J

pa222021

壁石(3面チーバー)

pa222022

壁石(前面チーバー)



pa222023

壁石(前/左面チーバー)

pa222024

壁石(前/右面チーバー)

pa222025

壁石(後面チーバー)

pa222026

壁石(3面チーバー)

