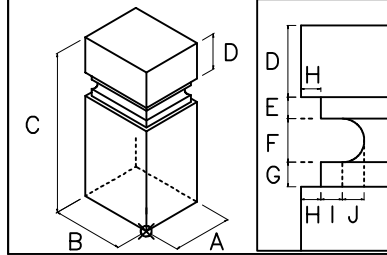


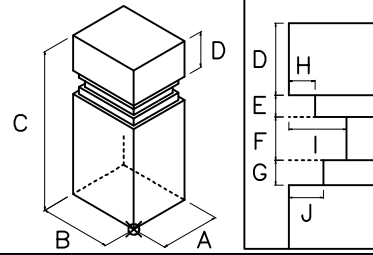
雅2000 伸縮部材追加一覽

小柱

pa201S15F

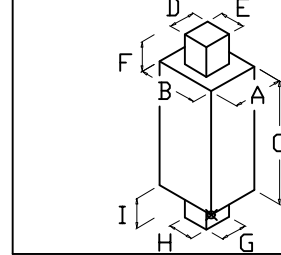


2股等 pa201S15G



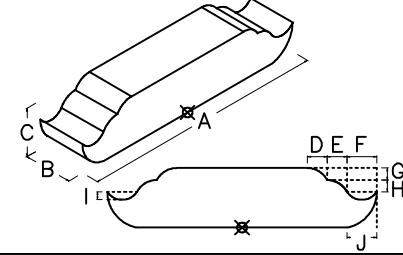
塔婆立

pa210S18



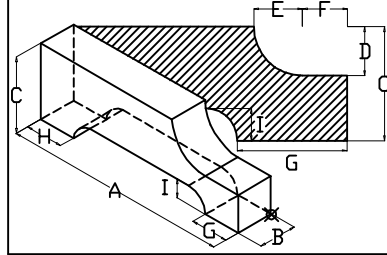
塔婆立柱 角ネリ付

pa210S35C



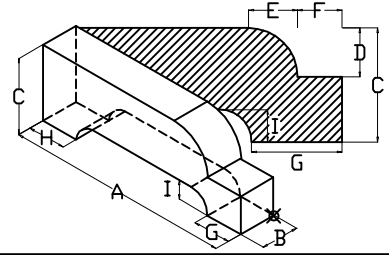
羽目／玉垣(1)

pa209104C



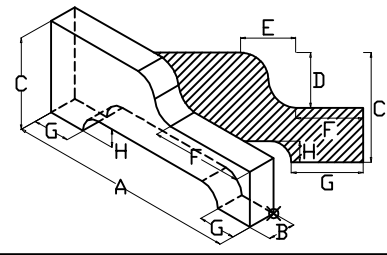
玉垣(1股内R落ち/水抜あり)

pa209105A



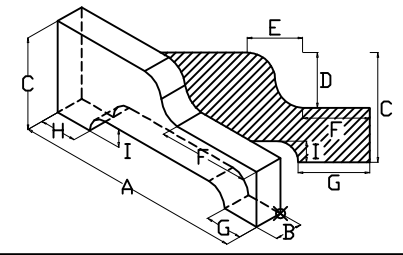
玉垣(1股内R落ち/水抜あり)

pa209129



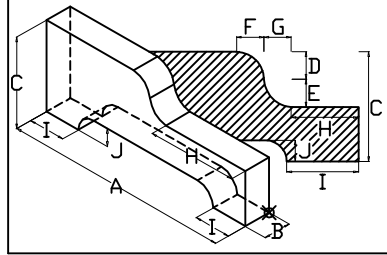
玉垣(電線/水抜あり)

pa209129A



玉垣(電線/水抜あり)

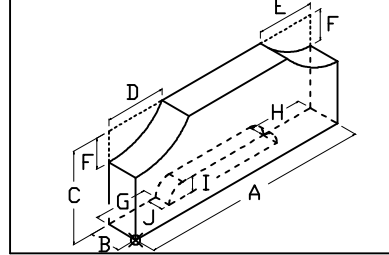
pa209129B



玉垣(電線/水抜あり)

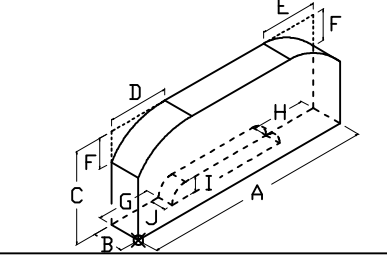
羽目／玉垣(2)

pa218S61A



羽目型後羽目

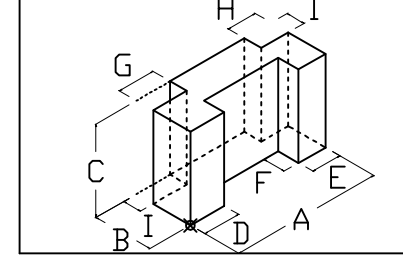
pa218S61D



羽目型後羽目

外柵

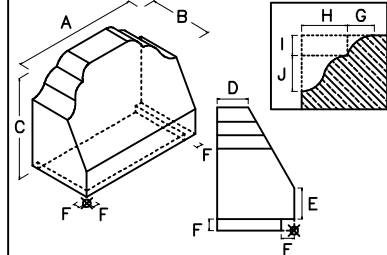
pa212S04L



切欠付

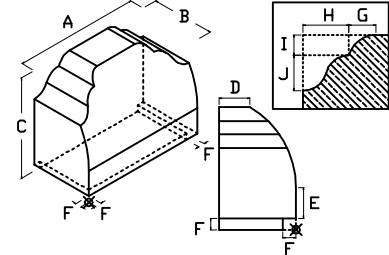
洋墓

pa216S17A



3股電線用前平

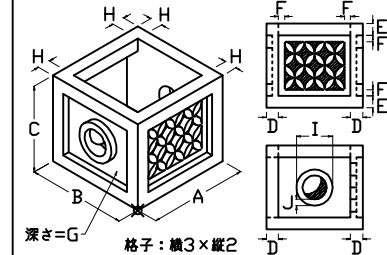
pa216S17C



3股電線用前凸R

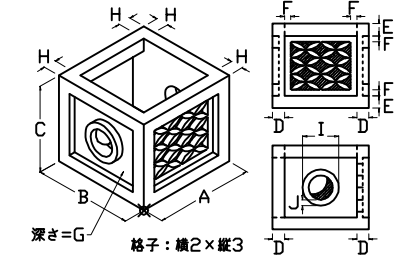
灯笼

pa225S01A



火袋(格子横3×縦2)

pa225S01B



火袋(格子横2×縦3)

舞台

pa217S41A

4層切欠付敷石

pa217S42B

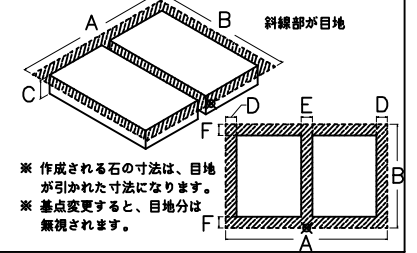
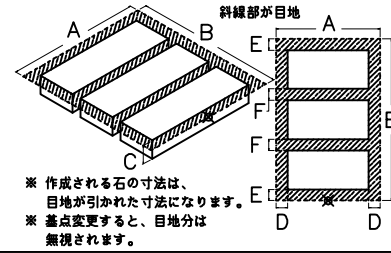
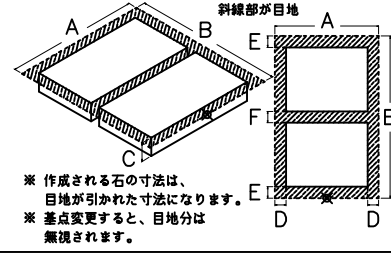
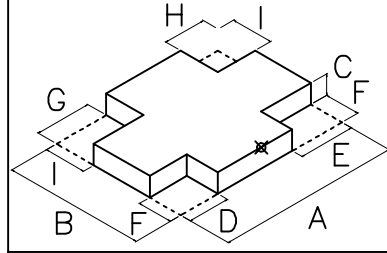
縦2枚等分割(外目地付)

pa217S42C

縦3枚等分割(外目地付)

pa217S42H

縦2枚等分割(外目地付)



pa217S42I

縦3枚等分割(外目地付)

親柱/門柱

pa202S08L

R付親柱(ベロ付)

下台/中台/上台

pa207S07S

切出高麗(前出)

供物台

pa219S04A

籠型供物台(2層付)

