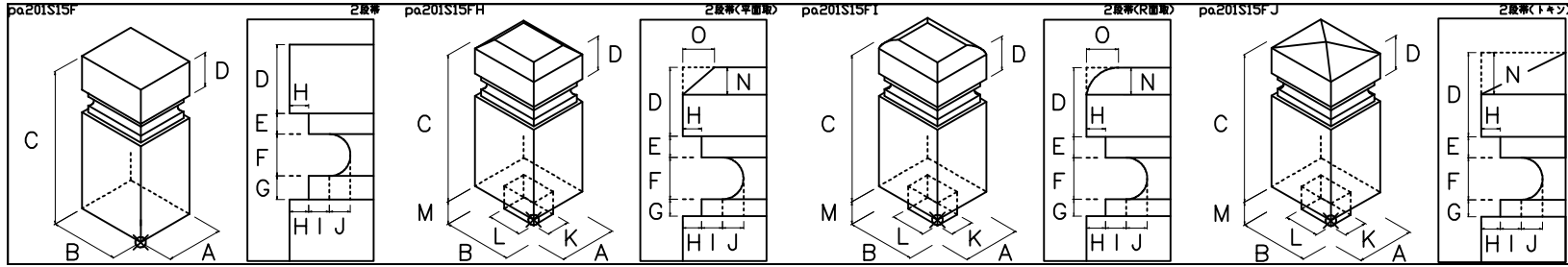
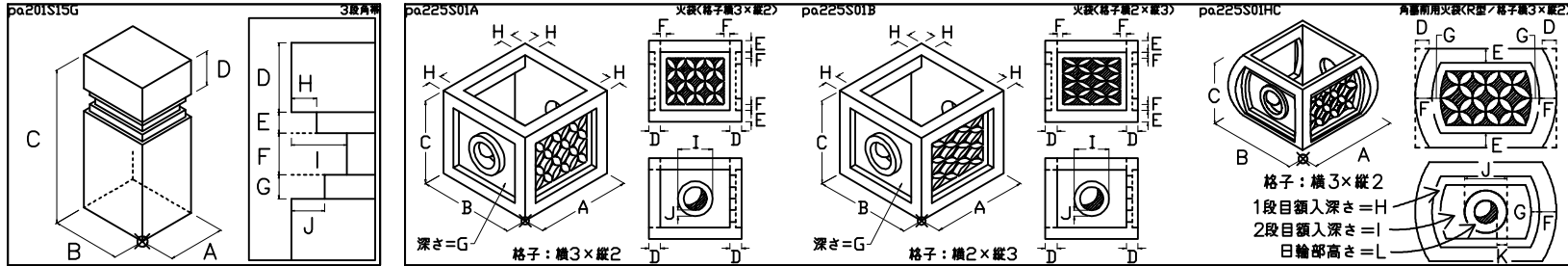


# 雅2004以降、雅V16 伸縮部材追加一覽

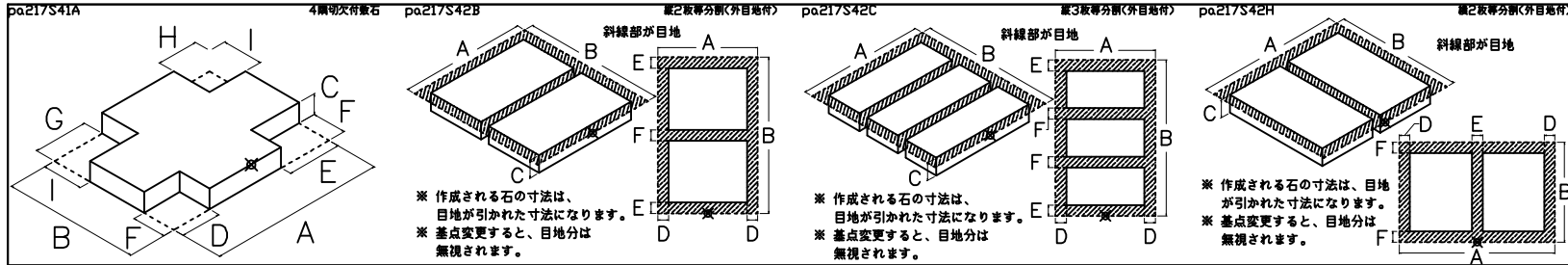
002\_小柱 / 01\_角柱



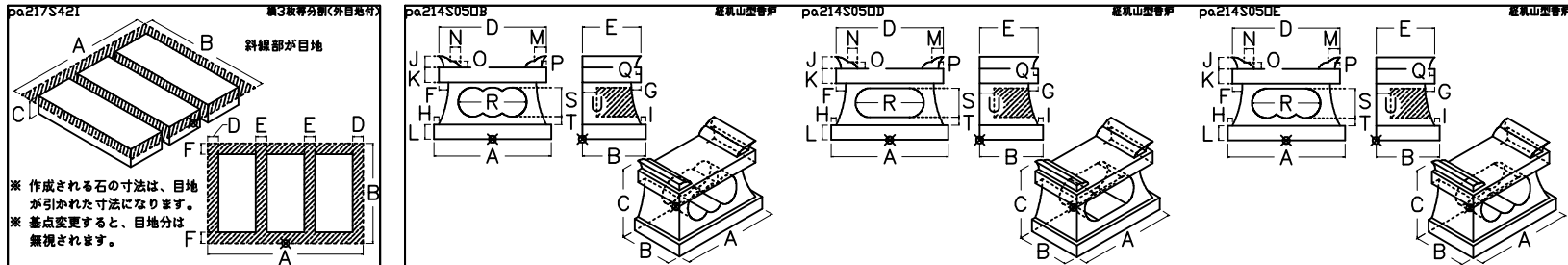
260\_灯笼



020\_敷石



137\_香炉



004\_羽目 / 01\_1段

pa218S61A

羽目型後羽目

pa218S61D

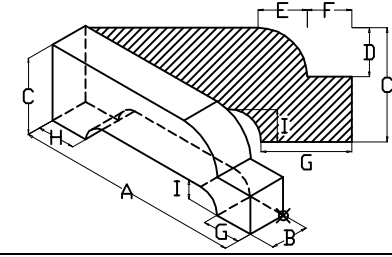
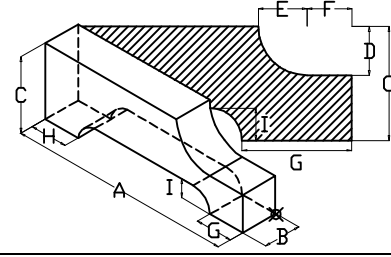
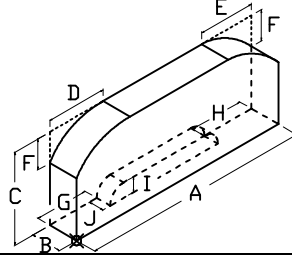
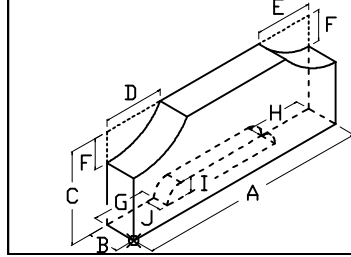
羽目型後羽目

PA209104C

玉埋(1段内R埋ち/水抜あり)

PA209105A

玉埋(1段内R埋ち/水抜あり)



004\_羽目 / 02\_2段

pa218S70AH

羽目型後羽目

pa218S71AH

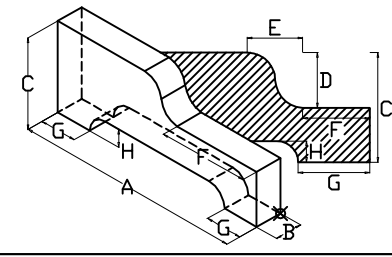
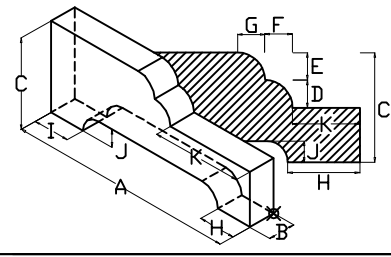
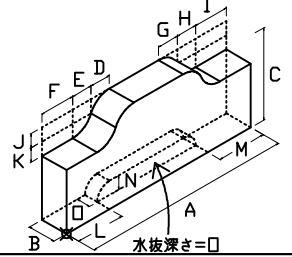
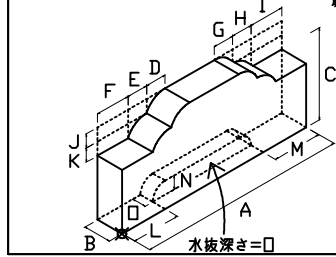
羽目型後羽目

pa209109A

玉埋(2段内R埋ち/水抜あり)

pa209129

玉埋(2段内R埋ち/水抜あり)



pa209129A

玉埋(2段内R埋ち/水抜あり)

pa209129B

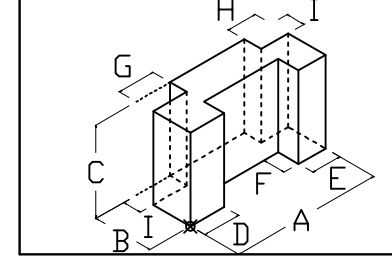
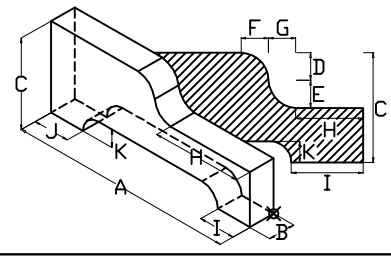
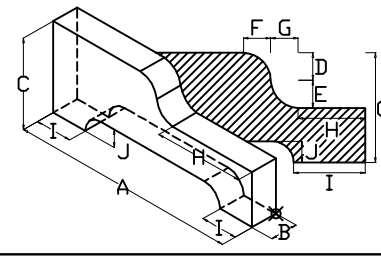
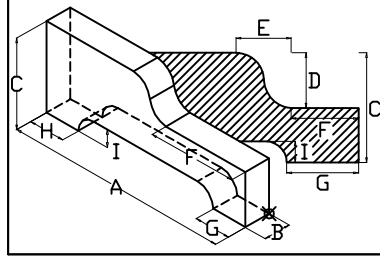
玉埋(2段内R埋ち/水抜あり)

pa209129C

玉埋(2段内R埋ち/水抜あり)

000\_外柵 / 01\_切欠物

pa212S04L



133\_下台・中台・上台

pa207S07S

切出電線(前出)

pa207S07SC

切出電線(前出)

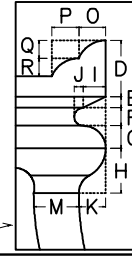
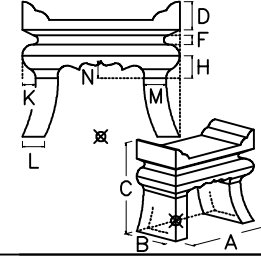
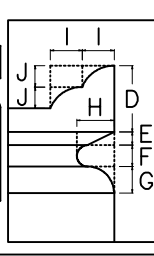
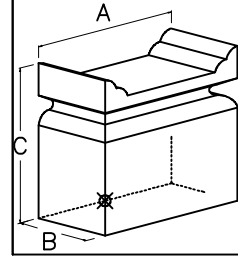
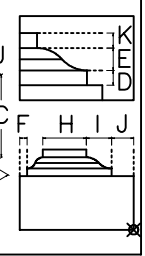
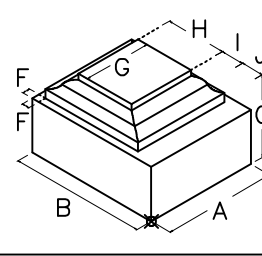
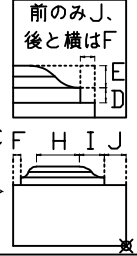
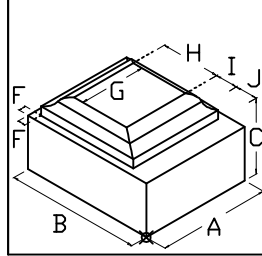
270\_供物台

pa219S04A

籠籠型供物台(2段R)

pa219S04AC

籠籠型供物台(2段R)



007 塔婆立 / 00\_笠

pa210S03DH

笠型座(1穴)丸ネソ/ハタゴ取組

pa210S35C

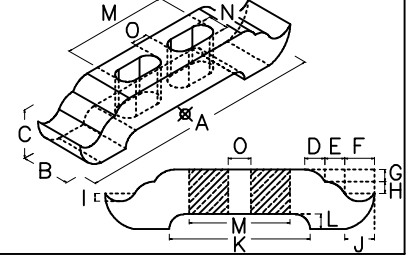
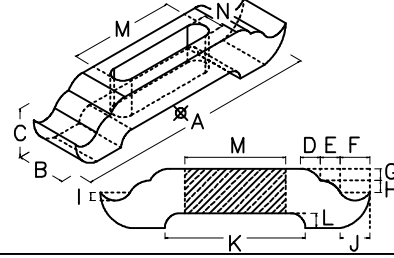
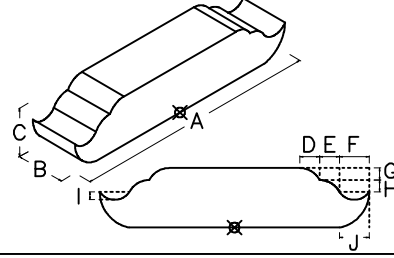
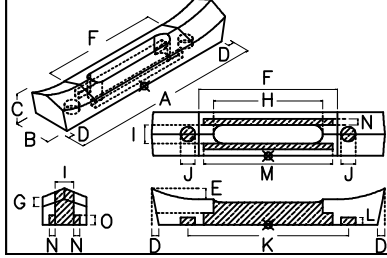
笠型座

pa210S35CA

笠型座(1穴)

pa210S35CB

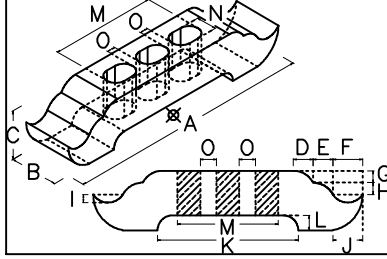
笠型座(2穴)



007 塔婆立 / 02\_柱

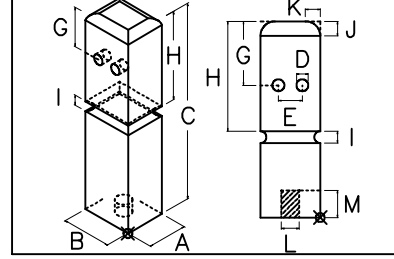
pa210S35CC

笠型座(3穴)



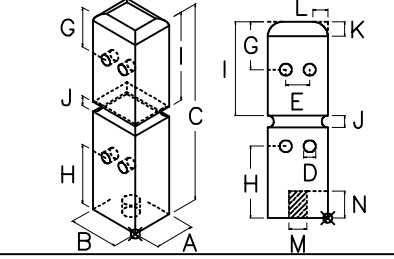
pa210S11BA

塔婆立柱 1段穴明/丸面/丸ネ



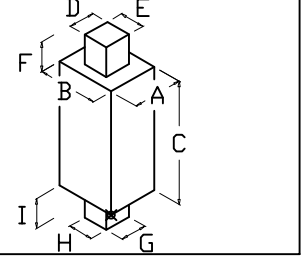
pa210S11CA

塔婆立柱 2段穴明/丸面/丸ネ



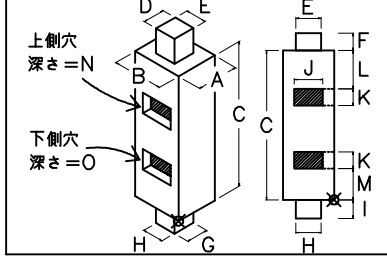
pa210S11B

塔婆立柱 丸ネソ付



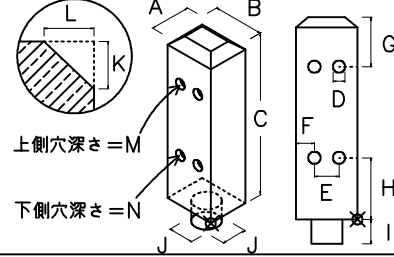
pa210S18AC

塔婆立柱之段角穴(丸ネソ付)



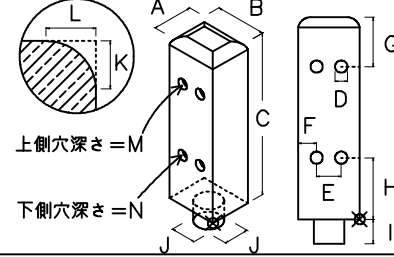
pa210S19JE

塔婆立柱之段角穴(丸ネソ付/平面取)



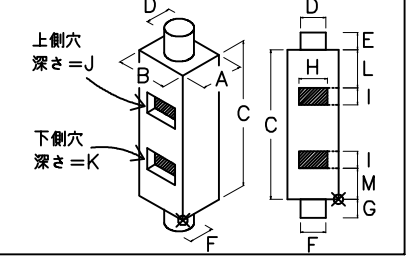
pa210S19JF

塔婆立柱之段角穴(丸ネソ付/平面取)



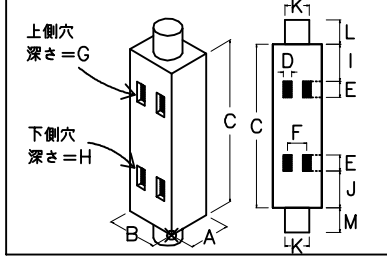
pa210S20AC

塔婆立柱之段角穴(丸ネソ付)



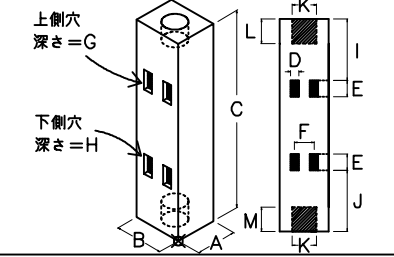
pa210S20JC

塔婆立柱之段角穴(丸ネソ付)



pa210S26JC

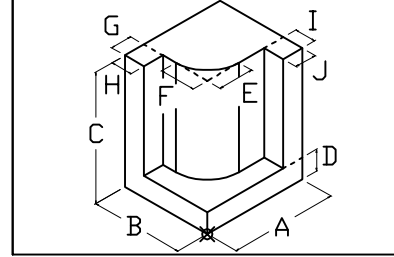
塔婆立柱之段角穴(丸ネソ取)



001 親柱 / 01\_R型

pa202S08L

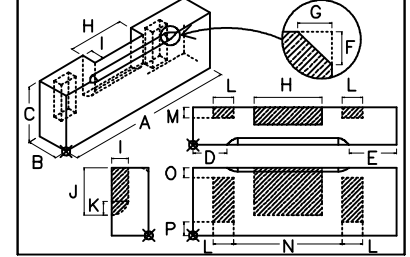
R付親柱(ネロ付)



005 階段 / 00\_階段

pa204S02YC

止付階段(背面明穴)



132 洋墓

